

Representative ITS Shelter COW Configurations

- » ***±125' (38m), ±120' (36m), ±106' (33m), ±89' (27m), ±72' (22m) & ±55' (17m) Self-Supporting & Guyed Tower Heights***
- » ***Fully Automated, Direct Drive Tower Operating System; No Belts, No Chains, No Guy Wires Required***
- » ***±500 lb (227kg) to ±650lb (295kg) Standard & Upgraded Tower Load Capacity; 120-220VAC/60-50Hz Configurations***
- » ***Greatest Self-Supporting and Guyed Wind/Payload Capacity of Any Comparable Tower System***
- » ***Custom Drawbar, Gooseneck & 5th Wheel Tow Configurations; Electric, Hydraulic or 2S1M Air Brake Systems***
- » ***20,000lb (9,070kg) to 36,000lb (16,326kg) Capacity GVWR; Outrigger Stabilization; Optional Auto Leveling***
- » ***Typical Shelter Dimensions (OD) from 8'0"-16'0"L (2.44m x 4.9m) x 8'0"W (2.44m) x 8'0"H (2.44m)***



Model Series Summary:

NC/SR Series Communication-Site-on-Wheels (COWs) are custom manufactured and accessorized by *ITS* pursuant to individual client specifications. Models include extra heavy-duty drawbar, gooseneck, and 5th wheel style trailer configurations that accommodate a variety of communications equipment shelter sizes, tower systems, power plants and other common and proprietary *ITS* and/or client-installed equipment. A multi-section ~ 21'0" (6.4m) or 25'0" (7.6m) each, lattice steel telescopic structure is designed to transport horizontally over the shelter and automatically tilt by means of a heavy-duty, chrome plated hydraulic cylinder. The tower system is raised to its full extension utilizing a direct drive, minimum 1HP, totally enclosed fan cooled (TEFC), wash-down rated electric winch motor and gearbox assembly. Each COW configuration is capable of being deployed, elevated to its full-extended height, and secured by a mechanical tower lock mechanism by one person in under 30 minutes. For added security and stability during poor weather conditions, excessive loading, long-term deployment, or to minimize structure deflection for critical applications, this tower structure may be further protected by the use of an optional guy cable and ground anchor system.

ITS "B" & "C" Series Towers: Elevations ~ ±125' (38m), 120' (36m), ±106' (33m), 89' (27m), 72' (22m) & 55' (17m)

- Self-Supporting and Guy Capable Steel Tower Structures
- ±500lb (227kg) - 650lb (295kg) Lift and Tilt Capacity
- Multiple Limit Switch Controls: Erection & Retraction
- From (3) to (6) 21' (6.4m) or 25' (7.6m) Ea. Tower Sections
- ¼" (6.35mm) & 5/16" (7.95mm) Aircraft Quality Cables
- Electronic Safety & Motor Protection Features
- Solid State Control Circuitry; Locking NEMA Enclosure
- Min. 1HP Motor/Gearbox Assembly; All Weather Rated
- Hydraulic Tilt Assembly with Integrated Safety Features
- Heavy-Duty Galvanized Tower Base Support Structure
- Direct Drive Telescopic Winch/Motor Assembly ~ No Belts/Chains
- Two (2) to Five (5) Coax/Cable Rings; Min. 15'0" (4.6m) Power Cable
- Positive Pull Down and Redundant Tower Cabling Systems
- 120VAC/60Hz and 220VAC/60-50Hz Power Configurations Offered
- Mechanical Tower Locking Mechanism; Tower Transport Locks
- Optional 3-Arm "T"-Bar Style 120° Antenna Mount Assembly
- Optional Multi-level/3-point Guy Cable and Ground Anchor Kit
- Optional Lightning Protection and Grounding Packages
- Optional Aviation Obstruction Light with UV Protected Cord
- Optional Stainless Steel Cables; Enhanced Corrosion Resistance

NC/SR SERIES ~ Communication-Site-on-Wheels (COW)

Representative ITS Shelter COW Configurations

NC/SR Series - General Trailer Description:

• Gross Vehicle Wt. Rating (GVWR):	Typical from 20,000lb (9,070kg) to 36,000lb (16,326kg) capacity
• Gross Axle Wt. Rating (GAWR):	Typical from 10,000lb (4,535kg) to 12,000lb (5,442kg) capacity each axle
• Overall Transport Length:	From $\pm 36'0"$ (10.9m) to $49'0"$ (14.9m)
• Overall Transport Width:	$\pm 8'0"$ (2.44m)
• Overall Transport Height:	Typical to $13'0"$ (3.96m)
• Platform Height:	Typical to $\pm 37"$ (94cm) rear/upper platform; $\pm 25"$ (63.5cm) forward/lower shelter platform and drawbar
• Deployed Footprint:	Typical from $\pm 22'6"$ (6.9m) wide to $\pm 54'0"$ (16.5m) long
• Axes:	Tandem axles, 10,000 lb (4,535kg) to 12,000lb (5,442kg) capacity each; EZ-lube or nominal oil bath
• Brake System:	Electric with break-away devise, Hydraulic/Surge or 2S1M ABS Air – FMVSS121
• Tires:	Typical dual LT235/85R16 LR G or G 215/75R17.5 LR H
• Wheels:	Typical 16" (41cm) x 6k 8-hole dual to 17.5 (44.5cm) x 6.7HC, 10-hole disc/hubs stud piloted, oil bath
• Shelter Platform:	Smooth steel plate, 1/8" (0.32cm); typical lengths from $\pm 8'6"$ (2.62m) to $\pm 18'0"$ (5.48m)
• Operating Platform:	Smooth steel plate, 1/8" (0.32cm) operating platform; typical length $\pm 14'6"$ (4.45m) to $17'6"$ (5.36m)
• Tow Configuration	Drawbar with 2-5/16" heavy-duty ball coupler or pintle; gooseneck with 2-5/16" ball coupler or inverted 5 th wheel sleeve; SAE 2" king pin with typical swing clearance to $\pm 82"$ (2m) and $\pm 18"$ (45.7cm) pin setting to accommodate single and tandem axle tractors; SAE 7-pin or 12-pin Military vehicle connector
• Safety Chains:	5/16" (.795cm) or 3/8" (.95cm) P-70 safety chains with back latches/hooks
• Stabilizing Outriggers:	Four (4) heavy-duty steel tube retractable outriggers; $\pm 6'7"$ (2m) front to $\pm 10'0"$ (3m) rear extension
• Outrigger Leveling Jacks:	Four (4) 12,000lb (5,442kg) static/10,000lb (4,535kg) lift capacity each, outrigger stabilizing jacks with minimum 14"x14" (36cm x 36cm) galvanized steel sand and marsh platforms
• Landing Gear:	Single or tandem 12,000lb (5,442KG) static capacity each, auto-retract, drop leg or 2-speed with adjustable height; minimum 14"x14" (36cm x 36cm) galvanized steel sand and marsh platforms; optional electric auto-stabilizing trailer landing gear
• Spare Tire & Carrier:	Full-sized spare tire secured beneath trailer structure or gooseneck/5 th wheel platform
• Lights & Wiring:	ICC/DOT sealed beam lights, LED, dual stop and turn lights, arctic/desert modular wiring package
• Perimeter Lashing Rings:	Typical 2 to 4 pair perimeter lashing "D" rings; additional at ends of each outrigger
• Leveling Jack Mounts:	Galvanized jacks stands, deck mounted with lanyard
• Ground Rod Storage Tube:	8'0" (2.44m) ground rod storage tube with removable end caps
• Perimeter Grounding Lugs:	Multiple pairs of lugs, perimeter channel mounted
• Perimeter Bubble Levels:	Multiple levels, perimeter channel mounted
• Wheel Chocks/Cones:	Set of DOT compliant wheel chocks and marker cones
• Reflectors/Notices:	Set of DOT compliant reflectors, warning and informational decals
• Trailer Finish:	Black painted structure with impact and weather resistant polyuria coating



NC/SR SERIES ~ Communication-Site-on-Wheels (COW)

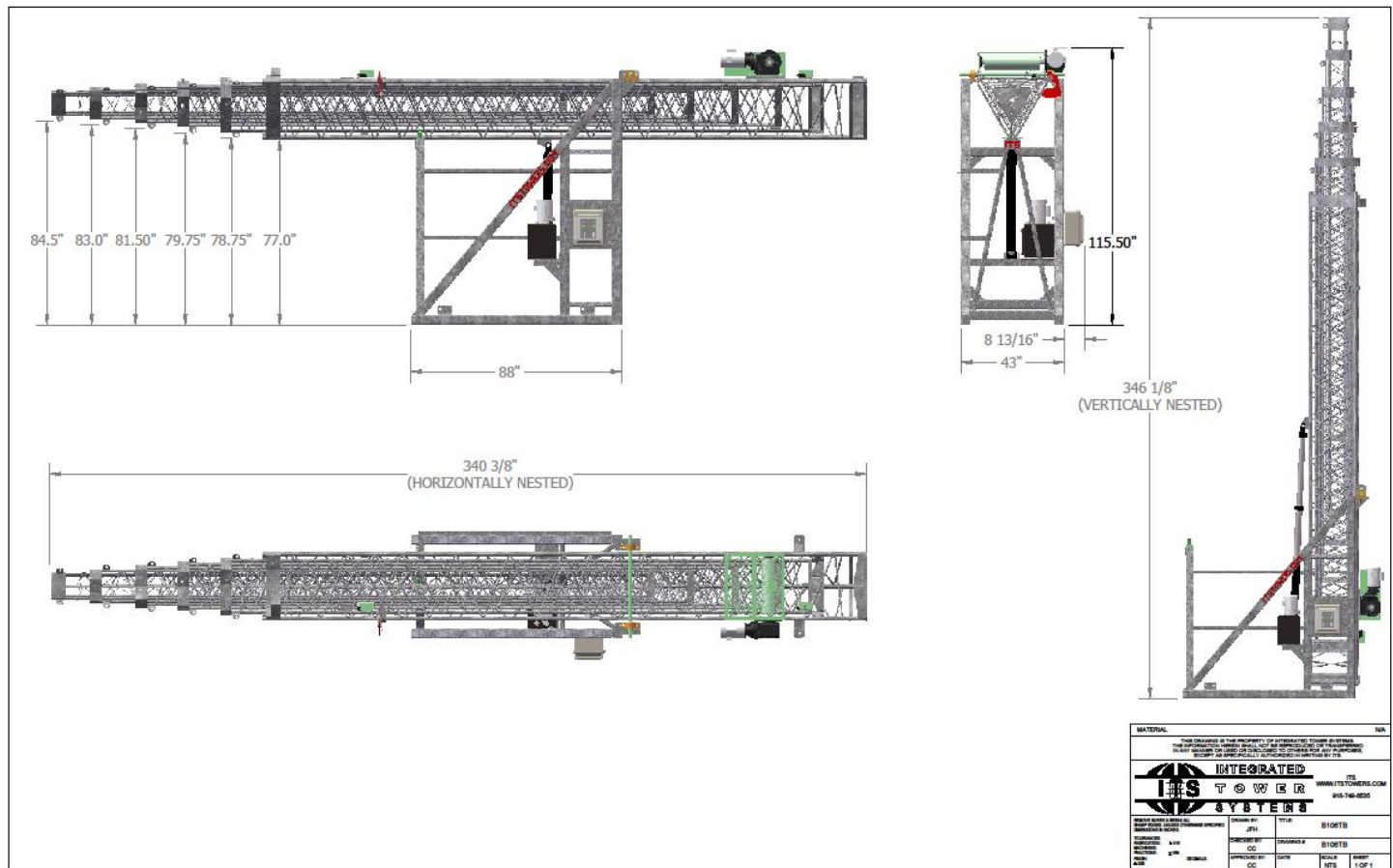
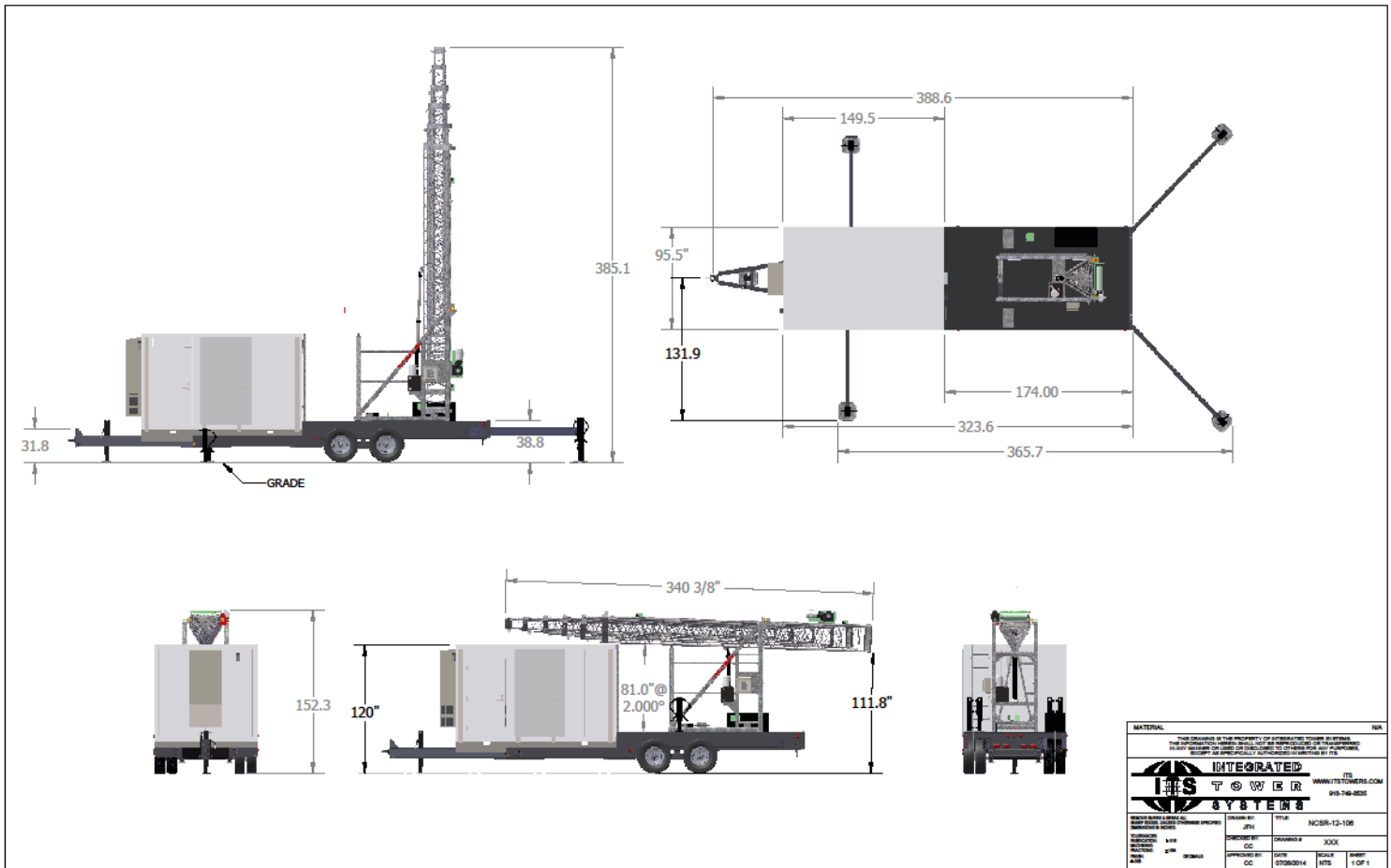
Representative ITS Shelter COW Configurations

NC/SR Series – Typical Shelter Description:

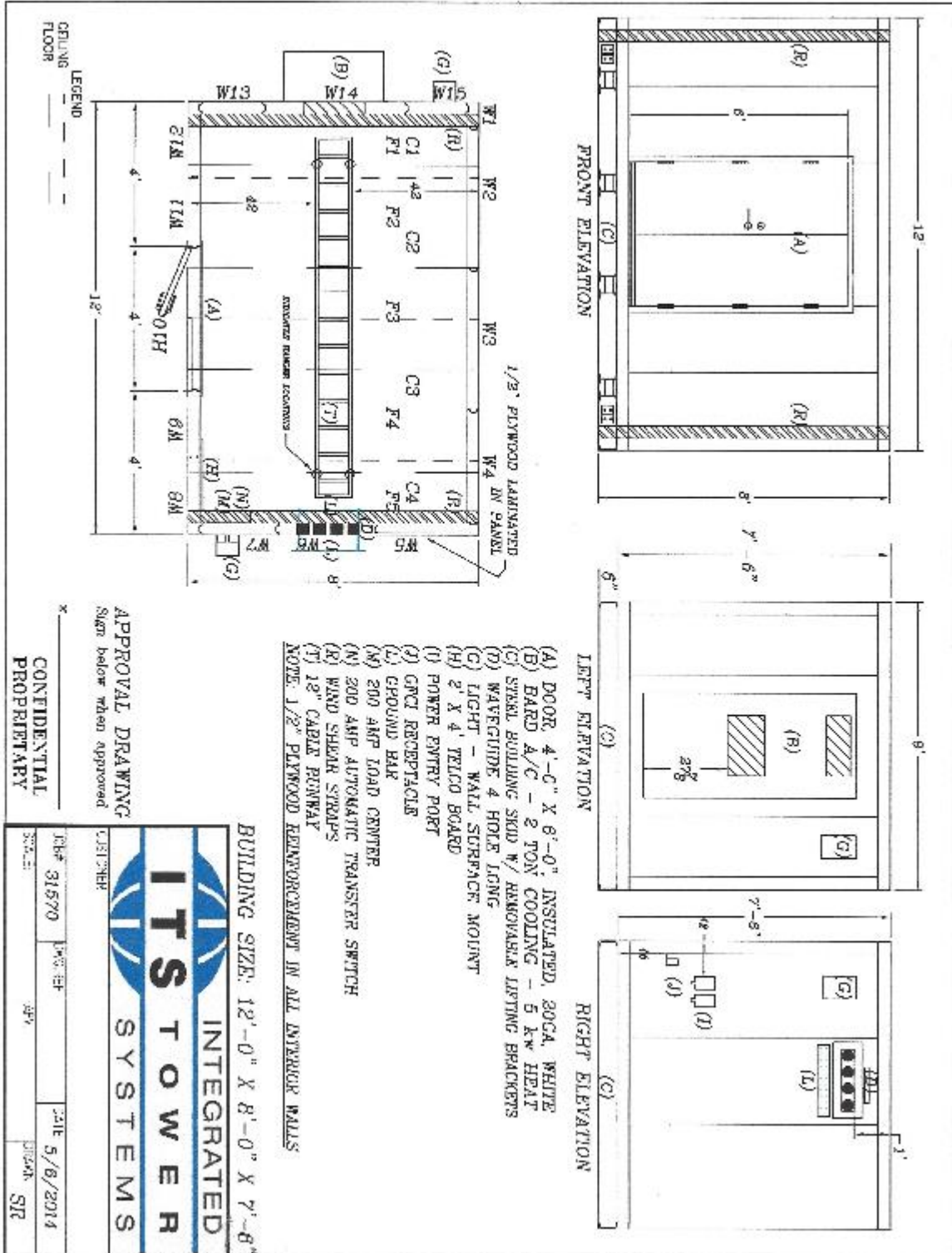
Typical Shelter Dimensions	A variety of custom shelter configurations range in size from 8'0" (2.44m) to 16'0" (4.88m) Long x 8'0" (2.44m) Wide x 8'0" (2.44m) High (Outside Dimensions). Shelters may be configured per client specifications, DOT and environmental requirements
Shelter Weight	Standard from 2,500lbs (1,138kg) to 6,000lbs (2,721kg) prior to installation of ITS and/or customer equipment
Standard Shelter Skid Construction	Reinforced, heavy-duty perimeter steel channel skid and cross members sized according to floor load requirement; minimum 250 lbs/sq. ft. All welded construction. Skid to be powder coat painted after fabrication. All steel to be A-36 grade
Standard Shelter Floor Construction	4" (10cm) thick floor panels – cam lock mechanism for panel assembly, high density expanded polystyrene foam laminated between exterior sheets of 26 gauge galvanized steel and interior sheets of 20 gauge galvanized steel, 1" (2.54cm) fire treated plywood reinforcement, minimum 3.5 lbs (1.6kg) weight per square foot of panel surface, minimum R-28 insulation factor, exterior white or tan stucco embossed finish, interior smooth galvanized, commercial grade floor tile or anti-slip rubber with aluminum base
Standard Shelter Wall Construction	4" (10cm) thick wall and ceiling panels – cam lock mechanism for panel assembly, high density expanded polystyrene foam laminated between sheets of 26 gauge galvanized steel, ½" fire treated plywood wall reinforcement, minimum 2.4 lbs (1.1kg) weight per square foot of panel surface, minimum R-18 insulation factor, exterior white or tan stucco embossed finish ~ multiple 4" (10cm)W powder coated shelter-to-skid wind shears; rating to 135 mph (217 km/hr.)
Standard Shelter Roof Treatment	Rain roof with thermoplastic single ply PVC roof system, 6" (15cm) termination bar and fasteners
Standard Shelter Door Construction	Typical 3'0" x 6'0" (.92m x 1.83m) or double 4'0" x 6'0" (1.22m x 1.83m), insulated, 20 gauge steel constructed, white or tan, 20 or 16 gauge steel frame, drip cap, threshold, weather seal, stainless steel NRP hinges, door lockset, lever-type assembly, deadbolt, latch guard, chrome plate grab handle
Standard Shelter Electrical	Shelter wiring is installed in surface mounted conduit. Interior devices such as switches and receptacles are installed in surface mounted boxes. All circuits are breaker protected. A service entrance is provided on the exterior of the shelter for connecting to main electrical power supply. Additional entrances are provided for telephone and generator hook-ups. All electrical is installed in accordance with the National Electric Code
Air Conditioning and Heating Systems	1 or 2 air conditioners; typical 2-ton (24,000 BTU) or 3-ton (36,000 BTU) capacity each, typical 3-5kW heat, wall mounted unit(s); tandem AC systems have lead lag controller. Standard configuration to include: thermostat, supply grill, return grill, low ambient fan control, adjustable time delay relay, low pressure by-pass, full length mounting brackets, rain hood, dry contact for remote on lockout, high and low pressure switches with lockout relay, 2" pleated filter, and internal disconnect ~ 230/208/1/60Hz
Partial List of Shelter Installed Accessories	<ul style="list-style-type: none"> • Surface mounted sodium exterior lights with photocell • Ground bar kit, exterior and/or interior mounted • Halo ground kit with accessories, #2 solid tinned copper drops • Wave guide entry ~ 2 to 8 ports • Exterior shelter receptacle(s), 120V, GFI • 100-200 Amp/240/120V/60Hz/1PH service panel, 20-42 breaker spaces and disconnect • 2" LB connectors for incoming power, optional generator • Shelter roof access ladder • Multiple duplex and/or four-plex receptacles, 20 amps each • Telco board, 2'x4' (.61m x 1.22m) with FRP on one side • Alarm terminal strip with open door, high/low temperature, smoke/fire alarm • Emergency lighting with battery backup • Fluorescent lights, 2' (.61m) – 4' (1.22m) each with RFI filter and cover or wire guard • Detachable shelter entry steps • Automatic or manual transfer switch • UPS and surge suppression systems, and much more



Representative NC/SR Series Drawbar Trailer Configurations w/ 109' (33m) AGL Tower



Representative 12' x 8' x 8' - OD (3.66m x 2.44m x 2.44m) Shelter Configuration



Representative 12' x 8' x 8' - OD (3.66m x 2.44m x 2.44m) Shelter Configuration

